

Drum Louvre



Description The LinkedAir Drum Louvres are designed for high supply air capacity applications with a long jet throw required. It equips adjustable blades to give full control of spread. They are ideally fitted with exposed duct or sidewall installations in factory, warehouses, airport, and sports complexes etc.

Construction Extruded Aluminium and Mechanical Held

Application Supply Air / Exhaust Air

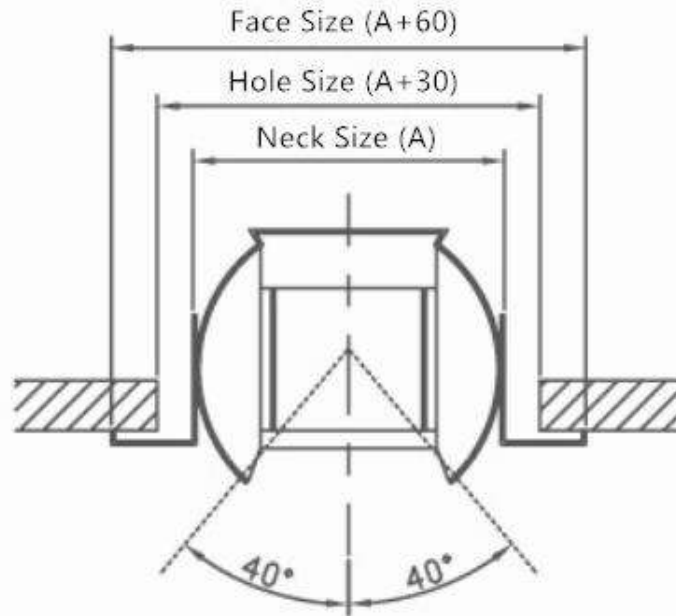
Size Flange Size: 30 mm

Finish White (Powdercoated)

Options

Colour
Natural Anodised Dulux Range

Accessories Opposite Blade Damper
Filter
Plenum with Side or Top Entry
Blanking Plate



Neck Size (mm) Area (m ²)	NECK AIR VELOCITY (m/s)	1	1.5	2	2.5	3	3.5	4
		Pressure Loss (Pa)	0.4	1.0	1.7	2.6	3.7	5.0
500x250 (0.125)	AIR FLOW RATE (l/s)	125	188	250	313	375	438	500
	THROW (m)	4.0-8.3	6.1-10.5	8.3-12.0	9.4-13.3	10.5-14.6	11.2-16.0	12.0-17.1
	NR LEVEL	—	—	11	18	24	29	34
650x250 (0.1625)	AIR FLOW RATE (l/s)	163	244	325	406	488	569	650
	THROW (m)	4.7-9.4	6.8-11.7	9.4-13.5	10.5-14.9	11.6-16.3	12.7-18.0	13.4-18.9
	NR LEVEL			13	20	26	32	36
750x250 (0.1875)	AIR FLOW RATE (l/s)	188	281	375	469	563	656	750
	THROW (m)	5.0-10.1	7.5-12.6	10.1-14.6	11.5-16.2	12.6-18.0	13.7-19.6	14.8-20.8
	NR LEVEL	—	—	13	21	26	32	37
900x250 (0.225)	AIR FLOW RATE (l/s)	225	338	450	563	675	788	900
	THROW (m)	5.3-11.2	8.3-13.7	11.2-16.0	12.6-17.9	13.7-19.6	14.7-21.1	15.9-22.6
	NR LEVEL	—	—	15	22	29	34	38
1000x250 (0.25)	AIR FLOW RATE (l/s)	250	375	500	625	750	875	1000
	THROW (m)	5.6-12.0	9.0-14.6	12.0-17.1	13.4-18.8	14.8-21.0	15.9-22.4	17.0-24.3
	NR LEVEL	—	—	16	24	30	35	39
500x300 (0.15)	AIR FLOW RATE (l/s)	150	225	300	375	450	525	600
	THROW (m)	4.2-9.0	6.8-11.2	9.0-13.0	10.4-14.6	11.2-16.0	12.2-17.4	13.0-18.5
	NR LEVEL	—	—	11	19	25	30	35
650x300 (0.195)	AIR FLOW RATE (l/s)	195	293	390	488	585	683	780
	THROW (m)	4.7-10.1	7.5-12.5	10.0-14.7	11.5-16.3	12.4-18.0	13.6-19.6	14.4-20.6
	NR LEVEL	—	—	13	20	27	32	36
750x300 (0.225)	AIR FLOW RATE (l/s)	225	338	450	563	675	788	900
	THROW (m)	5.3-11.2	8.3-13.7	11.2-16.2	12.6-17.9	13.7-19.6	14.7-21.1	15.9-22.6
	NR LEVEL	—	—	15	22	29	34	38
900x300 (0.27)	AIR FLOW RATE (l/s)	270	405	540	675	810	945	1080
	THROW (m)	5.8-12.4	9.0-14.9	12.2-17.6	13.7-19.6	14.8-21.2	16.2-23.0	17.3-24.7
	NR LEVEL			16	23	30	36	40

- All performance data below is based on the grilles mounted 300mm below a ceiling, with a floor height of 2.7 meters and supply 10°C below room temperature.
- **NOISE LEVEL** Noise data is based on a room absorption of 8db and measured at 0°.
- **Throws** are the horizontal throw distance in meters from the supply air grille to that point at which the airflow envelope has a terminal velocity of 0.25m/s. Correction factors below should be used upon other than 0°.

Correction factors by Angle			
Blow Angle	0°	15°	30°
Throw (m)	1	0.65	0.4
Pressure Loss (Pa)	1	1.25	1.80
NR Level	0	+3	+6